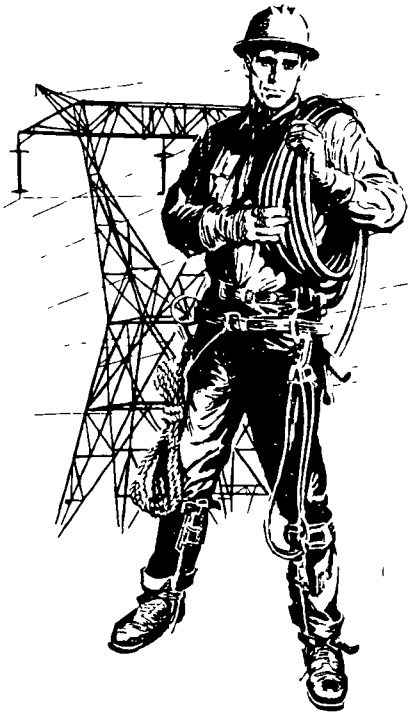


# TENTH ANNUAL JOINT UTILITY TRAINING WORKSHOP

JANUARY 22, 23, 24 - 1985



**RAMADA INN**

**605-336-0650**

**HOWARD JOHNSON**

**MOTOR LODGE**

**605-336-9000**

**SIoux FALLS, S.DAK.**

**SPONSORED BY**  
**JOINT UTILITY TRAINING TRAINING COMMITTEE**  
**(JUTS)**  
**SOUTH DAKOTA ELECTRIC COUNCIL**

## PROGRAM

### SESSIONS PROGRAM INFORMATION

Each session is designed as a 16-hour minicourse. Registration will be for one session only per individual. You will remain in that session for the entire length of the course. Some class sessions will be split to reduce class size and use laboratory facilities. Certificates will be sent to your respective company if attendance has been continuous.

### REGISTRATION

Pre-Paid Registration  
\$30.00 Per Person

Tuesday, January 22, 1985

Ramada Inn

10:00 a.m. to 12:00 p.m.

### LUNCHEON

Wednesday, January 23, 1985

Ramada Inn

12:00 p.m. to 1:00 p.m.

All session times will be:

Tuesday	<u>1:00</u> p.m. to <u>5:00</u> p.m.
Wednesday	8:00 a.m. to 12:00 Noon 1:00 p.m. to 5:00 p.m.
Thursday	8:00 a.m. to 12:00 Noon

SESSION I

Ramada Inn

LEADERSHIP SEMINAR

Registration Fee \$30.00

Title: Basic Supervisory Skills

Description: Topics will include the following:

Your Organization and You  
The Adult Learning Process  
The Human Touch at Work  
The Critical Shift  
Styles of Supervision  
The Supervisor as Motivator  
The Supervisor as Counselor  
The Psychological Contract  
Complaints and Grievances

Coordinator: Norman Anderson

Instructor: Kurt Peters  
Montana-Dakota Utilities Co.  
Bismarck, ND

Course limited to a maximum of 20 students.

SESSION II

Ramada Inn

TRENCHER - AERIAL - DIGGER DERRICK - CHAIN SAWS

Registration Fee \$30.00

Title: Operator's Seminar on Hydraulic Line and Aerial Equipment

Description: This course is designed for operators and maintenance personnel of bucket trucks, digger derricks, trenchers and chain saws. The course will cover safety, proper operation, hydraulics, testing, inspection and maintenance of equipment.

PART I

Title: Safety Tests and Inspection of Aerial Equipment  
(4 hour presentation)

Instructor: Clarence A. Larson, Manager, Test Operation ATC,  
St. Paul, MN

PART II

Title: Chain Saw Maintenance and Safety  
(2 hour presentation)

Instructor: Maury Richardson, Maury's Repair  
105 N. Franklin, Sioux Falls, SD

PART III

Title: Aerial Equipment Operation and Maintenance  
(6 hour presentation)

Instructor: Cornelius "Cornie" Sheehan  
Hydraulic Equipment Service, Inc., Seward, NE

PART IV

Title: Trencher Operations Safety and Maintenance  
(4 hour presentation)

Instructor: Kevin Klein, President, Vermeer Equipment  
of Nebraska, Inc., Lincoln, NE  
Paul Hagan, Representative  
Vermeer Mfg., Pella, Iowa

Coordinator: C.V. Graham

### SESSION III

Howard Johnson Motor Lodge

#### LINEMEN AND SERVICEMEN

Registration Fee \$30.00

Description: Course is designed for construction, operating, and maintenance personnel.

#### PART I

Title: Transformer Connections and Phasing

Description: This is a 4 hour segment of slides and lectures designed to give line personnel a non-technical basic review of single and three phase power, and delta-wye connections.

Instructor: Gordon Solee, Otter Tail Power Co., Fergus Falls, MN

#### PART II (Rotating Classes)

Title: Transformer Connections and Phasing

Description: This is a 4 hour hands-on session.

Instructor: Gordon Solee

Title: Rigging Safety

Description: 1 hour session on cable, chain, sling and rope rigging.

Instructor: Ron Beadle, Cambell Chain, Chicago, IL  
Gene Groves, Bethlehem Steel Co., Chicago, IL

Title: Pole Rot, Inspection and Treatment

Description: 1 hour session

Instructor: Joe Stanley, OSMOSE, W. Fargo, ND

Title: Tape and Cable Terminators

Description: 2 hour session

Instructor: Don Ness, 3M, St. Paul, MN

Title: Chain Saws

Description: 2 hour session

Instructor: Maury Richardson, Maury's Repair, Sioux Falls, SD

Title: Lineman Safety

Description: 2 hour session on the experience of an accident victim.

Instructor: Bob Mills, Pierre, SD

Coordinators: ✓ Willy Haufschild, Jim Mergen, Pete Swanson

SESSION IV  
Howard Johnson Motor Lodge  
ELECTRONIC RECLOSERS, VOLTAGE REGULATORS  
& OIL CIRCUIT RECLOSERS  
Part I

Title: All About the McGraw Edison Electronic Control for Three Phase Reclosers

Description: A 4-hour program which contains 1) an explanation of the control and its function as related to hydraulic controlled reclosers, 2) an explanation of the accessories to the control and their application, 3) an explanation of the maintenance of the control, and 4) the use of KMET control tester and testing of control.

Instructor: Doug Nelson, Border States Electric, Fargo, ND

PART II

Title: Regulator Maintenance

Description: Three minicourses on testing, maintenance and operating regulators, a regulator and parts will be available for watching in operations. Other regulators will be available for repair, a short course on voltage settings will be held.

Instructors: Larry Voelker, G.E. Representative

8:00 a.m. to 10:00 a.m. -- Mechanism  
Operation and Safety (2 hours)

Jeff England, Siemens-Allis Representative

10:00 a.m. to 12:00 p.m. -- Mechanism  
Operation and Safety (2 hours)

Ron Hoeft, East River Electric

1:00 p.m. to 5:00 p.m. -- Mini Regulator Panel  
School (4 hours)

PART III

Title: Oil Circuit Recloser

Description: A 4-hour program on single phase reclosers. Class will deal with 1) reclosers intended use in the distribution system, 2) fitting reclosers into the system and their advantages in system operation, 3) how a recloser works and performs its function, 4) the application of reclosers on the system to coordinate with other protective devices, and 5) basic recloser maintenance.

Instructor: R.J. (Bud) Dikeman, Lexington Switch and Controls, Cleveland, OH

Coordinators: Roger Nagel, Duane Vlasman

529-5578

SESSION V

Ramada Inn

ELECTRIC METERING

Registration Fee \$30.00

Description: A course for metermen and utility employees who occasionally are called on to perform metering duties. Topics covered will be basic metering principles, single phase and three phase meters, demands, magnetic tapes, self contained and instrument transformer installations. A "hands-on" clinic will be held for wiring of various types of metering installations using instrument and phase shifting transformers. 12 hours.

Instructor: <sup>SALES</sup> Mike Cannon, Westinghouse Electric Corporation,  
Sioux City, IA ~~DRINKER~~ ABLEY ENCA.

Description: Detection of energy diversion. Metering safety for the meterman. Model demonstration of load management equipment. 3 hours.

Instructor: Art Kolle, Otter Tail Power Company, Fergus Falls, MN

Description: Panel discussion on practices used in meter departments. Bring your questions and comments about metering practices and find out how similar situations are handled by other meter departments. 1 hour.

Instructors: Mike Cannon and Art Kolle

Coordinators: Al Kubousek, John Wheeler

## SESSION VI

Ramada Inn

### ENGINEERING AND OPERATIONS

Registration Fee \$30.00

#### PART I

Title: Motors

Description: This is a 4 hour session covering motor starting, motor problems, open delta connected motors and application problems.

Instructor: Ron Lamberty, Shakstad's, Sioux Falls, SD

#### PART II

Title: URD

Description: This is a 4 hour session covering design and marking of underground distribution systems.

Instructor: Don Sass, Northern States Power, Minneapolis, MN

#### PART III

Title: Cable Fault Locating and High Voltage Testing

Description: This is a 4 hour session covering SS&R's mobile unit and equipment, design considerations and typical trends in fault cables.

Instructors: Matthew C. Schwartz, P.E., and Dave Ness, Schmit, Smith and Rush, Bismarck, ND

#### PART IV

Title: Panel Discussion

Description: Bring your questions or problems to ask the panel members or what other utilities are doing.

Instructors: Ron Lamberty, Don Sass, Matthew Schwartz, Dave Ness, and Wayne Knaback, SDSU

Coordinators: Lloyd Marquardt, Andy Jensen



## SESSION VII

Howard Johnson Motor Lodge

### DEFENSIVE DRIVING

#### PREVENTION OF LOWER BACK PAIN

### OVERVIEW OF CHEMICAL DEPENDENCY AND ITS EFFECTS ON THE WORKPLACE

#### PART I

Title: Defensive Driving

Description: An 8 hour course on defensive driving

Instructor: Gary Paganini, Director, South Dakota Safety Council, Sioux Falls, SD

#### PART II

Title: The Back School

Description: This 4 hour segment will cover the anatomy and functions of the back, contributing factors of lower back pain and injury, guidelines for good body mechanics, and the effects of nutrition, exercise, fitness, and stress on the prevention of lower back pain and injury.

Instructor: Larry Houck, Physical Therapist, McKennan Hospital, Sioux Falls, SD

#### PART III

Title: Overview of Chemical Dependency and its Effects on the Workplace

Description: One out of four people will become directly affected by a chemically dependent person. This 4 hour segment will focus on the early and middle stages of chemical dependency and the impact of chemical dependency on the workplace and co-workers.

Instructor: Don Lee, Certified Chemical Dependency Counselor, South Dakota Safety Council, Sioux Falls, SD

Course limited to a maximum of 25 students.

Coordinators: Jim Books, Lyle Johnson

## JOINT UTILITY TRAINING COMMITTEE

**Chairman:**

Duane Vlasman, East River Electric, Madison, SD

**Vice Chairman:**

Andy Jensen, City of Brookings, Brookings, SD

**Secretary:**

Merlyn Wookey, Northwestern Public Service Co., Huron, SD

**Treasurer:**

Roger Nagel, South Dakota Rural Electric Association, Pierre, SD

**Registration:**

Mary Ellen Wagner, South Dakota Rural Electric Association,  
Pierre, SD

**South Dakota Electrical Council:**

Doug Vallis, Black Hills Power & Light Co., Rapid City, SD

### JUTS MEMBERS

**South Dakota Rural Electrics:**

Norman Anderson, Charles Mix Electric, Lake Andes, SD

Lyle Johnson, H-D Electric, Clear Lake, SD

Bob Rademacher, Beadle Electric, Huron, SD

John Wheeler, Butte Electric, Newell, SD

**Investor-Owned Electric Utilities:**

Willy Haufschild, Montana-Dakota Utilities, Moberidge, SD

Al Kubousek, Otter Tail Power Co., Milbank, SD

Jim Books, Black Hills Power & Light, Rapid City, SD

Vic Graham, Northern States Power Co., Sioux Falls, SD

**Municipal Electric Utilities:**

Jim Mergen, Sioux Falls Light Department, Sioux Falls, SD

Pete Swanson, Watertown Municipal Utilities, Watertown, SD

Lloyd Marquardt, City of Pierre, Pierre, SD

The JUTS Committee would like to thank the following instructors and their companies for their participation in the Ninth Annual Joint Utility Training Workshop. Without their involvement, this program would not be possible.

All instructors are cordially invited to breakfast at 7 a.m. on Wednesday, January 23 and Thursday, January 24 at Howard Johnson's -- compliments of the JUTS Committee.

Ron Beadle	Cambell Chain Chicago, IL
✓ Mike Cannon	Westinghouse Electric Corp. Sioux City, IA
R.J. (Bud) Dikeman	Lexington Switch and Controls Cleveland, OH
Jeff England	Siemens-Allis Overland Park, KS
Gene Groves	Bethlehem Steel Co. Chicago, IL
Ron Hoeft	East River Electric Madison, SD
Larry Houck	McKenna Hospital Sioux Falls, SD
Paul Hujan	Vermeer Manufacturing Pella, Iowa
Art Kolle	Otter Tail Power Company Fergus Falls, MN

Kevin Klein	Vermeer Equipment of Nebraska Lincoln, NE
Wayne Knaback ✓	South Dakota State University Brookings, SD
Ron Lamberty	Shakstad's Sioux Falls, SD
Clarence Larson	Test Operation ATC St. Paul, MN
Don Lee	South Dakota Safety Council Sioux Falls, SD
Doug Nelson ✓	Border States Electric Fargo, ND
Dave Ness	Schmit, Smith and Rush Bismarck, ND
Don Ness	3M St. Paul, MN
Gary Paganini ✓	South Dakota Safety Council Sioux Falls, SD
Kurt Peters	Montana-Dakota Utilities Bismarck, ND
Maury Richardson	Maury's Repair Sioux Falls, SD

Don Sass	Northern States Power Minneapolis, MN
Matthew Schwartz	Schmit, Smith and Rush Bismarck, ND
Cornelius Sheehan	Hydraulic Equipment Service Seward, NE
Gordon Solee	Otter Tail Power Company Fergus Falls, MN
Joe Stanley	OSMOSE W. Fargo, ND
Larry Voelker	General Electric Pittsfield, MA

$$R = \frac{E}{I}$$

$$P = I^2 R$$

$$I = \frac{E}{R}$$

173410.4

240 X